

DENAIR

**WELCOME
TO**

DENAIR

DENAIR

COMPANY LOGO

DENAIR



GROUP COMPANY MILESTONE

In 1875, wherein Denair Germany invented the first refrigerant compressor in the world.

in 1998, Denair set up a branch office in Shanghai, China to market compressor units which are made in Germany.

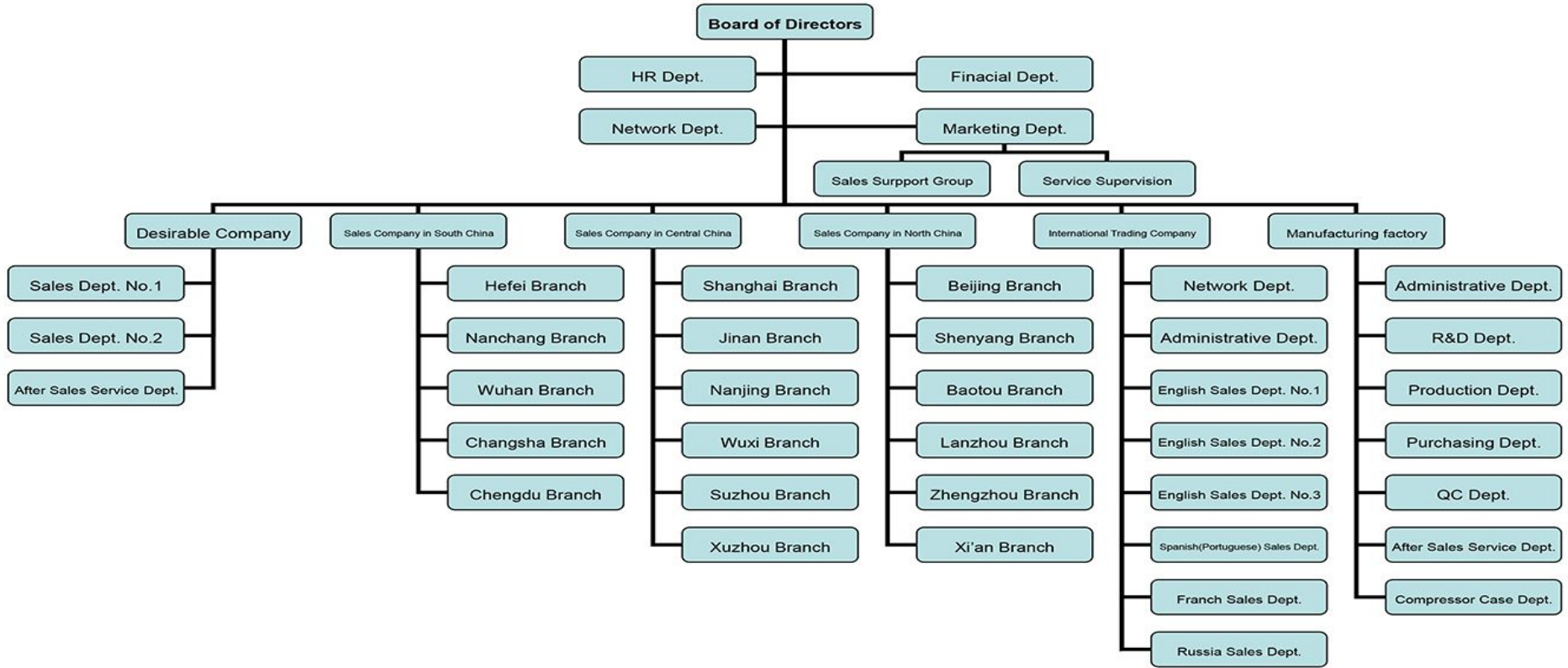
In 2006, Shanghai Denair Compressor Co., Ltd and Denair Compressor Manufacturing Co., Ltd in Shanghai were established to produce and market air compressor and air compressor spare parts.

In 2009, Denair has set up many branches in the main cities in mainland China and pioneered the 4S sales and service model in the compressor industry. It is also in this year when Denair has become a famous brand in the Chinese market from then on.

In 2010, Denair set up an international trading company and began to export air compressors and mining equipments worldwide. And until now, Denair products have been exporting to more than 70 countries in South America, North America, Asia, Oceania, Africa and Europe.

In 2013, Denair application for China National laboratory of Energy Efficiency was approved by China National Institute of Standardization. It signifies that Denair has made a big step forward in engaging to energy-saving work.

DENAIR GROUP ORGANIZATION CHART





OUR MISSION

Being a world-renowned high-end brand with sustainable development, constantly improving its own value and sharing it with the customers and staff. Committed to offer our customers a silent and energy-saving manufactured products.



OUR VISION

Common pursuit of understanding, learning,
obeying and appreciating, realize perfect life
value and happiness pursuit;

Being honest, innovative, executive,
introspective, realize common development
with customers.



OUR CORE VALUES



Happy development

Sensible and trustworthy

Learning and Innovation

Obey and execution

Thanksgiving and self-examination

DENAIR

EXISTING FACTORY



DENAIR

NEW FACTORY IN CONTEMPLATION



FREQUENTLY ASKED Q and A

- How many staff are there in the DENAIR Group? ● About 400.
- How many employees do you have in your factory? ● About 80.
- How many staff do you have in your international trading company? ● 20. We have salespersons who can speak English, French, Russian, Spanish, Indonesian and Arabic.
- What's our factory's production capacity? ● About 500 units per month.
- What's the annual sales volume of the DENAIR Group? ● About USD 40,000,000.00 in 2014.
- What's the annual sales volume of our international trading company? ● About USD 8,000,000.00 in 2014, 20% of the Group annual sales.
- How many units does DENAIR export in a month? ● About 80-100.

QUALIFICATION CERTIFICATES

1. ISO CERTIFICATE



ISO9001 the United Kingdom LRQA Certification

From design, manufacture to delivery, Denair Compressor abides by the quality system of ISO9001.



QUALIFICATION CERTIFICATES

2. CE CERTIFICATE



CE European Union standard certification
Denair Compressor product design&production meet the standard of European Union.

Certificate – Сертификат – 證明書 – Certificat – 증명서 – شهادة



Verification of Compliance

No. EC.1282.0A130610 DCM1172

Certificate's Holder: Denair (Shanghai) Compressor Manufacturing Co., Ltd.
Building 4, No. 58, Hulu Road, Xintang Town, Songjiang District, Shanghai, China

Product: Double Screw Air Compressor

Model(s): DVA-11A, DVA-15A, DVA-18A, DVA-22A/W, DVA-30A/W, DVA-37A/W, DVA-45A/W, DVA-55A/W, DVA-75A/W, DVA-90A/W, DVA-110G/W, DVA-132G/W, DVA-150G/W, DVA-180G/W, DVA-200G/W, DVA-220G/W, DVA-280G/W, DVA-315G/W, DVA-355G/W, DVA-400G/W, DVA-450G/W, DVA-500G/W, DVA-550G/W, DVA-600G/W, DVA-650G/W, DVA-700G/W, DVA-750G/W, DVA-800G/W, DVA-850G/W, DVA-900G/W, DVA-950G/W, DVA-1000G/W, DVA-1100G/W, DVA-1200G/W, DVA-1300G/W, DVA-1400G/W, DVA-1500G/W, DVA-1600G/W, DVA-1700G/W, DVA-1800G/W, DVA-1900G/W, DVA-2000G/W, DVA-2100G/W, DVA-2200G/W, DVA-2300G/W, DVA-2400G/W, DVA-2500G/W, DVA-2600G/W, DVA-2700G/W, DVA-2800G/W, DVA-2900G/W, DVA-3000G/W, DVA-3100G/W, DVA-3200G/W, DVA-3300G/W, DVA-3400G/W, DVA-3500G/W, DVA-3600G/W, DVA-3700G/W, DVA-3800G/W, DVA-3900G/W, DVA-4000G/W, DVA-4100G/W, DVA-4200G/W, DVA-4300G/W, DVA-4400G/W, DVA-4500G/W, DVA-4600G/W, DVA-4700G/W, DVA-4800G/W, DVA-4900G/W, DVA-5000G/W, DVA-5100G/W, DVA-5200G/W, DVA-5300G/W, DVA-5400G/W, DVA-5500G/W, DVA-5600G/W, DVA-5700G/W, DVA-5800G/W, DVA-5900G/W, DVA-6000G/W, DVA-6100G/W, DVA-6200G/W, DVA-6300G/W, DVA-6400G/W, DVA-6500G/W, DVA-6600G/W, DVA-6700G/W, DVA-6800G/W, DVA-6900G/W, DVA-7000G/W, DVA-7100G/W, DVA-7200G/W, DVA-7300G/W, DVA-7400G/W, DVA-7500G/W, DVA-7600G/W, DVA-7700G/W, DVA-7800G/W, DVA-7900G/W, DVA-8000G/W, DVA-8100G/W, DVA-8200G/W, DVA-8300G/W, DVA-8400G/W, DVA-8500G/W, DVA-8600G/W, DVA-8700G/W, DVA-8800G/W, DVA-8900G/W, DVA-9000G/W, DVA-9100G/W, DVA-9200G/W, DVA-9300G/W, DVA-9400G/W, DVA-9500G/W, DVA-9600G/W, DVA-9700G/W, DVA-9800G/W, DVA-9900G/W, DVA-10000G/W

Directives: 2006/42/EC Machinery
2006/95/EC Low Voltage

Standards: EN ISO 12100:2010, EN 50204-1:2005+AC:2010

Remark: This Verification of Compliance has been issued on a voluntary basis. ECM confirms that a Technical Construction File (TCF) is existent for the above listed products. The TCF satisfactorily covers the essential requirements of the above listed Directives. Other relevant Directives have to be observed in case they are applicable. This Document is only valid for the equipment and configuration described and in conjunction with the TCF detailed above. Whereas the Manufacturer is responsible of the certification of the product(s) and not exempted to perform all the necessary activities before placing the product(s) on the market. The Manufacturer is also responsible of the internal production control to ensure the product(s) are in compliance with the essential requirements of the above mentioned Directives. (This certificate can be checked for validity at www.entecma.com)

Date of issue JUNE 2013

Certification Chief Manager: 
Certification Deputy Manager: 

Ente Certificazione Macchine Srl
Via Minicio, 386/a - 41056 Savignano s.P. (MO) - ITALY
☎ +39 059 763738 - +39 059 766206 ✉ info@entecma.it 🌐 www.entecma.it

QUALIFICATION CERTIFICATES

3. ENERGY-SAVING CERTIFICATE



GC energy-saving certification

Denair Compressor product design, production and service quality system meet the requirements of energy-saving certification.



DENAIR

SALES OFFICE





SALES OFFICE



DENAIR

SALES OFFICE



DENAIR

SALES OFFICE



WORKSHOPS



WORKSHOPS



WORKSHOPS



DEPOTS





OUR TEAMS





OUR TEAMS



OUR TEAMS



DENAIR

你好

Hello

Bonjour

OUR TEAMS

Hola

Здравствуй

مرحباً

HALO



SOCIAL LOVING CARE ACTIVITIES



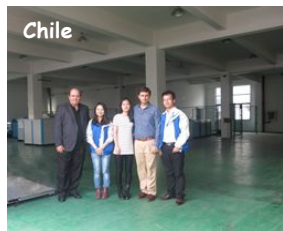
SOCIAL LOVING CARE ACTIVITIES



BIRTHDAY PARTY



GLOBAL CUSTOMERS



INTERNATIONAL DISTRIBUTION NETWORK



Electric Driven Stationary Screw Air Compressor

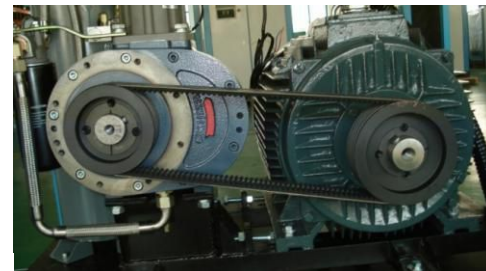
◆ Belt Driven Screw Air Compressor

Air delivery/Air flow/Capacity: 0.5 ~ 16.5m³/min (17.6~582.6cfm)

Working pressure: 7~13bar (101.5~188.5psi)

Motor power: 5.5~90KW (7.5~120HP)

Type: air cooling or water cooling





◆ Direct Driven Screw Air Compressor

Air delivery/Air flow/Capacity: 2.3 ~ 102m³/min (81.2 ~ 3601.6cfm)

Working pressure: 7 ~ 13bar (101.5 ~ 188.5psi)

Motor power: 18.5 ~ 550KW (25 ~ 750HP)

Type: air cooling or water cooling



◆ High Pressure Oil-injected Double Screw Air Compressor

Air delivery/Air flow/Capacity: 14~80m³/min (495~2825cfm)

Working pressure: 18~40bar (262~580psi)

Motor power: 110~600KW (150~820HP)

Type: air cooling or water cooling



◆ Standard Type Variable Frequency/VSD/Inverter Screw Air Compressor

Air delivery/Air flow/Capacity: 0.24 ~ 45m³/min (8.5~1589cfm)

Working pressure: 7~13bar (101.5~188.5psi)

Motor power: 7.5~250KW (10~340HP)

Type: belt driven or direct driven, air cooling or water cooling



Energy Saving



◆ Permanent Magnetic Variable Frequency/VSD/Inverter Screw Air Compressor

Air delivery/Air flow/Capacity: 0.7 ~29m³/min (25~1025cfm)

Working pressure: 7~13bar (101.5~188.5psi)

Motor power: 18.5~160KW (25~200HP)

Type: direct driven,air cooling



◆ Combined/Full Features Screw Air Compressor

Air delivery/Air flow/Capacity: 0.5 ~ 6.8m³/min (17.6~240cfm)

Working pressure: 7~13bar (101.5~188.5psi)

Motor power: 5.5~37KW (7.5~50HP)

Type: belt driven or direct driven, air cooling or water cooling



◆ Low Pressure Screw Air Compressor

Air delivery/Air flow/Capacity: 6.55 ~92m³/min (231.3~3248.5cfm)

Working pressure: 3~5bar (43.5~72.5psi)

Motor power: 22~355KW (30~475HP)

Type: belt driven or direct driven, air cooling or water cooling



◆ Scroll Type Oil Free Air Compressor

Air delivery/Air flow/Capacity: 0,415 ~ 3.6m³/min (15~127cfm)

Working pressure: 6~10bar (87~145psi)

Motor power: 3.7~37KW (5~50HP)

Type: air cooling



◆ Dry Type Oil Free Air Compressor

Air delivery/Air flow/Capacity: 6.8 ~ 43m³/min (240 ~ 1518cfm)

Working pressure: 7.5 ~ 10bar (108 ~ 145psi)

Motor power: 45 ~ 250KW (60 ~ 350HP)

Type: air cooling or water cooling



◆ Water-Lubricated Type Oil Free Air Compressor

Air delivery/Air flow/Capacity: 1.02 ~42.88m³/min (36~1514cfm)

Working pressure: 8~12.5bar (116~181psi)

Motor power: 7.5~250KW (10~350HP)

Type: air cooling or water cooling



Compressed Air Treatment Equipment

◆ High Inlet Temperature Air Cooling Refrigerated Air Dryer

- ◇ Inlet temperature : $\leq 80^{\circ}\text{C}$ (45°C)
- ◇ Cooling method: Air-cooling
- ◇ Inlet pressure: 0.4~1.3Mpa or other
- ◇ Pressure drop: $\leq 0.03\text{Mpa}$
- ◇ Dew point: 2~ 10°C
- ◇ Refrigerant: R22 or R407

Model	Capacity	Voltage	Compressor Power		Fan Power	Air	Weight	Dimension		
	Nm ³ /min	V/Hz	HP	KW	W	Connection	KG	L(mm)	W(mm)	H(mm)
DAD-1HTF	1.2	220/50	1	0.85	90	ZG1	50	630	450	640
DAD-2HTF	2.4	220/50	1	0.85	90	ZG1	80	700	450	830
DAD-3HTF	3.8	220/50	1.25	1.25	140	ZG1.5	105	850	500	920
DAD-6HTF	6.5	220/50	1.5	1.5	180	ZG1.5	150	880	550	1020
DAD-8HTF	8.5	220/50	2.5	1.8	180	ZG1.5	160	880	550	1020
DAD-10HTF	10.7	380/50	3	2.5	2*140	ZG2	240	1180	670	1080
DAD-13HTF	13.5	380/50	3	2.5	2*140	ZG2	260	1180	670	1080
DAD-15HTF	18	380/50	3.6	3	2*140	DN65	310	1360	710	1220
DAD-20HTF	23	380/50	5	4	4 (2) *180	DN80	400	1360	710	1220
DAD-25HTF	28	380/50	6	4.5	4 (2) *220	DN80	450	1650	750	1290
DAD-30HTF	33	380/50	7.5	6.5	6 (3) *250	DN100	780	1670	750	1575
DAD-40HTF	45	380/50	110.5	8.8	6 (3) *250	DN100	820	2000	950	1740
DAD-50HTF	55	380/50	12	10.2	6 (3) *450	DN125	900	2350	1050	1910
DAD-60HTF	65	380/50	15	13	8 (4) *180	DN125	1100	2550	1100	1940



◆ Heatless Purge Desiccant Air Dryer

- ◇ Purge Air: ≤12~15%
- ◇ Working Pressure: 0.6~1.0Mpa
- ◇ Inlet oil content: ≤0.01ppm
- ◇ Pressure Dew point: -20~-40°C
- ◇ Desiccant: Activated aluminum or Molecular sieve
- ◇ Working Periods: T=4~20Minutes
- ◇ Inlet temperature: 0~45°C

Model	Capacity	Air Connection	Dimension			Weight
	Nm ³ /min		L(mm)	W(mm)	H(mm)	KG
DAD-1WXF	1.2	ZG1	800	400	1376	120
DAD-2WXF	2.4	ZG1	800	400	1476	180
DAD-3WXF	3.8	ZG1.5	1000	450	1600	270
DAD-5WXF	5.5	ZG1.5	1000	450	1890	300
DAD-6WXF	6.5	ZG1.5	1200	500	1950	400
DAD-8WXF	8.5	ZG1.5	1400	600	2000	510
DAD-10WXF	10.7	ZG2	1400	600	2090	700
DAD-13WXF	13.5	ZG2	1400	600	2140	740
DAD-15WXF	18	DN65	1400	600	2200	780
DAD-20WXF	25	DN80	1670	650	2435	1180
DAD-30WXF	35	DN100	1670	650	2566	1760
DAD-40WXF	45	DN100	1750	750	2700	2200
DAD-50WXF	55	DN125	1800	750	2755	2600
DAD-60WXF	65	DN125	1900	700	3070	3100
DAD-80WXF	85	DN150	2620	1120	3070	4100
DAD-100WXF	110	DN150	3100	1650	3200	5200
DAD-160WXF	160	DN200	3240	1770	3190	6000



◆ Externally Heated Purge Desiccant Air Dryer

- ◇ Purge Air: $\leq 4\sim 6\%$
- ◇ Working Pressure: 0.6~1.0Mpa
- ◇ Inlet oil content: $\leq 0.01\text{ppm}$
- ◇ Pressure Dew point: $-20\sim -70^{\circ}\text{C}$
- ◇ Desiccant: Activated aluminum or Molecular sieve
- ◇ Working Periods: $T=60\sim 180\text{Minutes}$
- ◇ Inlet temperature: $0\sim 45^{\circ}\text{C}$

Model	Capacity	Heater Power	Air Connection	Dimension			Weight
	Nm ³ /min	KW		L(mm)	W(mm)	H(mm)	
DAD-1MXF	1.2	1.5	ZG1	800	480	1420	145
DAD-2MXF	2.4	1.5	ZG1	800	480	1520	200
DAD-3MXF	3.8	1.5	ZG1.5	1000	525	1600	330
DAD-5MXF	5.5	1.5	ZG1.5	1000	525	1890	350
DAD-6MXF	6.5	3	ZG1.5	1200	550	1950	430
DAD-8MXF	8.5	3	ZG1.5	1400	600	2000	550
DAD-10MXF	10.7	4.5	ZG2	1400	600	2090	750
DAD-13MXF	13.5	4.5	ZG2	1400	600	2140	790
DAD-15MXF	18	4.5	DN65	1400	650	2200	830
DAD-20MXF	25	6	DN80	1670	725	2435	1250
DAD-30MXF	35	8	DN100	1670	725	2566	1480
DAD-40MXF	45	8	DN100	1750	775	2700	1740
DAD-50MXF	55	15	DN125	1800	775	2755	2260
DAD-60MXF	65	15	DN125	1900	800	3070	2600
DAD-80MXF	85	20	DN150	2620	1120	3073	3380
DAD-100MXF	110	30	DN150	3100	1650	3200	4390
DAD-160MXF	160	50	DN200	3240	1770	3190	5800



◆ Low Dew Point Combined Air Dryer

- ◇ Inlet Pressure: $\leq 0.6 \sim 1.0$ Mpa
- ◇ Inlet temperature: $\leq 45^{\circ}\text{C}$
- ◇ Pressure Dew Point: $-40 \sim -70^{\circ}\text{C}$
- ◇ Purge Air: $\leq 3 \sim 5\%$
- ◇ Cooling water temperature: ≤ 0.01 ppm
- ◇ Purge Drop: ≤ 0.08 Mpa

Model	Capacity		Circulation volume of cooling water	Air Connection	Dimension			Weight
	Nm ³ /min	M ³ /h			L(mm)	W(mm)	H(mm)	
DAD-1MZ*	1.2			ZG1	1020	710	1380	350
DAD-2MZ*	2.4			ZG1	1020	710	1480	450
DAD-3MZ*	3.8			ZG1.5	1100	980	1810	500
DAD-6MZ*	6.5			ZG1.5	1400	1050	1950	710
DAD-10MZ*	10.7	1.8		ZG2	1550	1350	2090	1100
DAD-13MZ*	13.5	1.8		ZG2	1570	1380	2140	1200
DAD-15MZ*	18	3.0		DN65	1600	1420	2145	1300
DAD-20MZ*	25	3.6		DN80	1750	1400	2410	1800
DAD-30MZ*	35	5.9		DN100	2100	1680	2600	2700
DAD-40MZ*	45	7.2		DN100	2290	1800	2710	3300
DAD-50MZ*	55	9.2		DN125	2430	1950	2755	3400
DAD-60MZ*	65	10.8		DN125	2490	2180	3070	3800



◆ High Performance Oil Remover

◇ Inlet Pressure: $\leq 0.2 \sim 1.0 \text{Mpa}$

◇ Inlet temperature: $\leq 5^{\circ}\text{C} \sim 80^{\circ}\text{C}$

◇ Initial pressure drop $\leq 0.005 \text{Mpa}$

◇ Filter route: $5\mu\text{m}$

◇ Water removal rate: $\geq 99\%$

◇ Outlet air oil content: $\leq 0.01 \text{ppm}$

Model	Capacity	Air Connection	Weight	Dimension	
	Nm ³ /min		KG	diameter(mm)	H(mm)
SFU-1	1.2	ZG1	24	133	845
SFU-2	2.4	ZG1	27	133	845
SFU-3	3.8	ZG1.5	30	133	845
SFU-6	6.5	ZG1.5	35	133	1030
SFU-10	10.7	ZG2	65	159	1265
SFU-13	13.5	ZG2	75	159	1139
SFU-15	17	DN65	90	159	1139
SFU-20	25	DN80	105	159	1630
SFU-30	33	DN100	136	273	1846
SFU-40	45	DN100	150	325	1990
SFU-60	65	DN125	182	412	2240



◆ Air Filter

Air delivery/Air flow/Capacity: 1.2 ~600Nm³/min

Type: C/T/A/AA/H



Typical Compressed Air System Chart





Portable Screw Air Compressor

◆ Diesel Portable/Mobile/Movable Screw Air Compressor

Air delivery/Air flow/Capacity: 2.0 ~34m³/min (70.6~1200.5cfm)

Working pressure: 7~25bar (101.5~362.6psi)

Power: 15~336KW (20~448HP)

Engine: Cummins, YTO, Yuchai, etc.

Type: mobile or stationary (skid mounted)



◆ Electric Portable/Mobile/Movable Screw Air Compressor

Air delivery/Air flow/Capacity: 6 ~ 25.5m³/min (211.9~900.4cfm)

Working pressure: 7~18bar (101.5~261psi)

Motor power: 37~185KW (50~250HP)



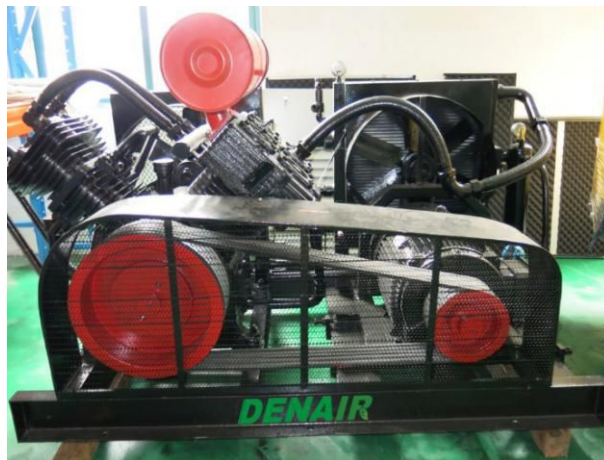
Piston Air Compressor

◆ High Pressure Piston Air Compressor

Air delivery/Air flow/Capacity: 0.6 ~5m³/min (10.6~176.6cfm) **or other**

Working pressure: 17~450bar (246.6~652.6psi) **or other**

Motor Power: 9~55KW (12~75HP) **or other**



Drill Rig

◆ Crawler Drilling Rig & Down The Hole Drilling Rig

Model	Max.drilling depth	Drilling Diameter	Type	Matching Air Compressor
DC-725A	25m	80~115mm	Crawler	DCY-10/13
DC-725B	25m	80~115mm	Crawler	DCY-10/13
DC-725D	25m	80~115mm	Crawler	DCY-10/13
DC-725H	25m	80~115mm	Crawler	DCY-10/13
DC-726A	25m	90~130mm	Crawler	DCY-15/13
DC-726B	25m	90~130mm	Crawler	DCY-15/13
DC-726D	25m	90~130mm	Crawler	DCY-15/13
DC-680	40m	92~200mm	Crawler	DCY-15/18
DC-590	40m	115~165mm	Crawler	DCY-15/18
DC-558	25m	90~165mm	Crawler	DCY-15/18
GMJ2-18	20m	33~55mm	Crawler	Hydraulic
H281	20m	49~89mm	Tire	Hydraulic
HCL7	20m	115mm	Crawler	Hydraulic
H6	18m	76~89mm	Crawler	Hydraulic
DQD70	15m	68~80mm	DTH	DCYP-7/7
DQD110	20m	68~130mm	DTH	DCYP-12/7
DQF100	20m	68~130mm	DTH	DCYP-12/7
DQJ100A	20m	68~100mm	DTH	DCYP-7/7
DQJ100A	20m	68~100mm	DTH	DCYP-7/7



DENAIR



Air Tools





CONTACT US

Company Name: Shanghai **DENAIR** Compressor Co., Ltd.

Office Add.: No.18, Baosheng Road, Songjiang District, Shanghai, China

Factory Add.: No. 733, Wenbin Road, Xinbang Town, Songjiang District, Shanghai, China

Tel: 0086 21 37831829

Fax: 0086 21 60405929

Mobile: [0086 15221829940](tel:008615221829940)

Skype: hchamtt

QQ: 2355741333

Email: rainbow@denaircompressor.net

Website: <http://www.denairgroup.net>

DENAIR

The End!
Thank You!
www.denairgroup.net